



SEE SAFELY.™

# SAFEVIEW™

PERFORMANCE WIPER BLADE

## Installation Instructions



Seasonal performance

Streak free visibility

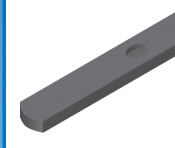
Easy installation

### WIPER ARM TYPES

Small Hook



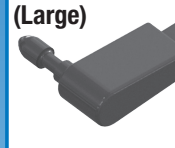
7mm Bayonet



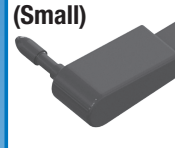
Large Hook



1/4" Pin (Large)



3/16" Pin (Small)



### SMALL HOOK INSTALLATION



1 Place arm flat in front of connector

2 Make sure top of connector and bottom of arm are flush with each other

3 Slide blade to arm until click occurs (Audible click may be heard)

4 Installation complete

### LARGE HOOK INSTALLATION



1 Rotate connector 45 degrees and keep arm parallel to connector

2 Insert hook into connector

3 Pull hook past front retention tabs (Audible click may not be heard)

4 Installation complete