



SAFEVIEW

PERFORMANCE WIPER BLADE

Installation Instructions



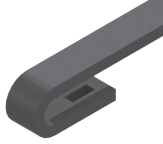
Seasonal performance

Streak free visibility

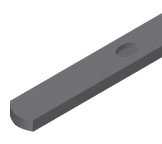
Easy installation

WIPER ARM TYPES

Small Hook



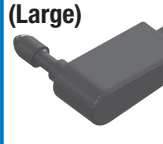
7mm Bayonet



Large Hook



1/4" Pin (Large)



3/16" Pin (Small)



SMALL HOOK INSTALLATION



Place arm flat in front of connector

Make sure top of connector and bottom of arm are flush with each other

Slide blade to arm until click occurs (Audible click may be heard)

Installation complete

LARGE HOOK INSTALLATION



Rotate connector 45 degrees and keep arm parallel to connector

Insert hook into connector

Pull hook past front retention tabs (Audible click may not be heard)

Installation complete